

CY1 series magnetic coupling rodless cylinder



CY1B25-300

Reference model

CY1B

Series code

25×300

Cylinder inner diameter x Stroke

Technical specification

Cylinder diameter (mm)	6	10	15	20	25	32	40	50	63
Working medium	Air (Cleaned by 40 μm filter)								
Acting mode	Double acting								
Highest operating pressure	0.7Mpa								
Lowest operating pressure	0.18Mpa								
Ambient and fluid temperature	-10~60°C								
Piston speed	50-400mm/s								
Buffering mode	rubber buffer on two ends								
Stroke length tolerance (mm)	0~250+1.0/0 251~1000+1.4/0 1001~+1.8/0								
Lubrication oil	Not need								
Port size	M5×0.8			1/8 "			1/4 "		
Body material	Stainless steel								

Stroke

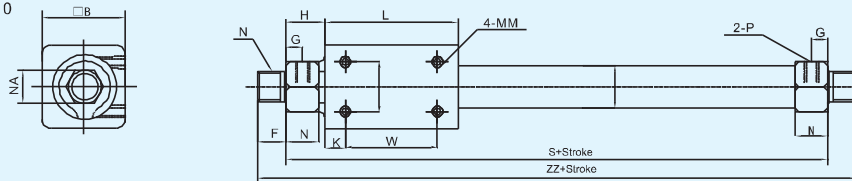
Cylinder diameter (mm)	Standard Stroke (mm)										Maxi Stroke(mm)	Permissible Stroke (mm)				
	50	100	150	200	250	300	350	400	450	500						
6	50	100	150	200								300	300			
10	50	100	150	200	250	300						500	500			
15	50	100	150	200	250	300	350	400	450	500			750			
20		100	150	200	250	300	350	400	450	500	600	700	800	1000		
25		100	150	200	250	300	350	400	450	500	600	700	800	1500		
32		100	150	200	250	300	350	400	450	500	600	700	800	1500		
40		100	150	200	250	300	350	400	450	500	600	700	800	900	1000	
50		100	150	200	250	300	350	400	450	500	600	700	800	900	1000	
63		100	150	200	250	300	350	400	450	500	600	700	800	900	1000	6000

Selection of sensor switch

Model	Inner diameter	6	10	15	20	25	32	40	50	63
Sensor switch		D-A73								

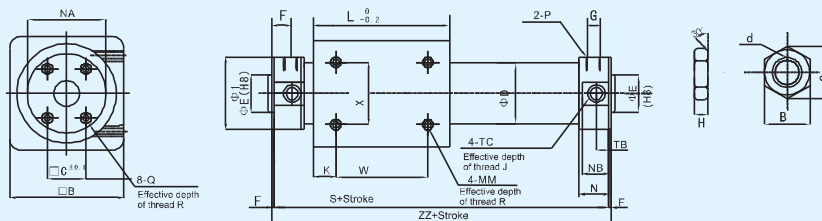
Technical specification

Basic type CY1B6-10



Model	Stroke	Port size	φD	□B	F	G	H	K	L	N	NA	MM	NN	S	W	X	ZZ
CY1B6	~300	M5×0.8	7.6	17	9	5	14	5	35	10	14	M3×0.5×4.5	M10×1.0	63	25	10	81
CY1B10	~500	M5×0.8	12	25	9	5	12.5	4	38	11	14	M3×0.5×4.5	M10×1.0	63	30	16	81

Basic type CY1B50-63



Model	Stroke	Port size	□B	□C	φD	φE(h8)	F	G	H	I	K	L	MM×J	N	NA	NB	Q×R	S	TB	TC×R	W	X	ZZ
CY1B50	~2000	RC1/4	86	32	53	30 ⁰ _{0.033}	2	14	33	58.2	25	110	M8×1.25×12	25	55	23	M8×1.25×16	176	14	M12×1.25×7.5	60	60	180
CY1B63	~2000	RC1/4	100	38	66	32 ⁰ _{0.039}	2	14	33	72.2	26	122	M8×1.25×12	25	59	23	M8×1.25×16	188	14	M12×1.5×11.5	70	70	192